

## Careers in Mental Health and Human Services

Careers in mental health and human services offer a range of specializations in a variety of work environments. There are opportunities to work with all ages from children to older adults, either in groups or individually.

Individuals considering careers in the mental health or the human services field should be empathetic listeners, patient, compassionate, observant with good communication skills and motivated to support others. Those with lived experiences as a consumer, or family member of a consumer receiving mental health services are encouraged to apply for these programs.

The California Community Colleges offer training programs for entry-level positions in the human services and mental health fields. The programs range from associate degree programs to certificate programs. Some colleges offer non-credit training through their continuing education programs.

Depending on career goals, there are a variety of pathways for these careers, so it is advised to speak with an academic counselor. Financial aid information is also available at each college. For salary and labor market information, please visit the State of California Employment Development Department website at: [www.labormarketinfo.edd.ca.gov](http://www.labormarketinfo.edd.ca.gov)



**ECONOMIC & WORKFORCE DEVELOPMENT**  
through the  
CALIFORNIA  
COMMUNITY  
COLLEGES

This publication was produced pursuant to grant agreement number 11-307-021 & 12-307-021 by the Health Workforce Initiative. The project was supported by Economic and Workforce Development funds awarded to Butte Community College by the Chancellor's Office of the California Community Colleges. Copyright 2013.

## Pathways to CSUs and UCs

(There are additional pathways, it is important to speak with an academic counselor)

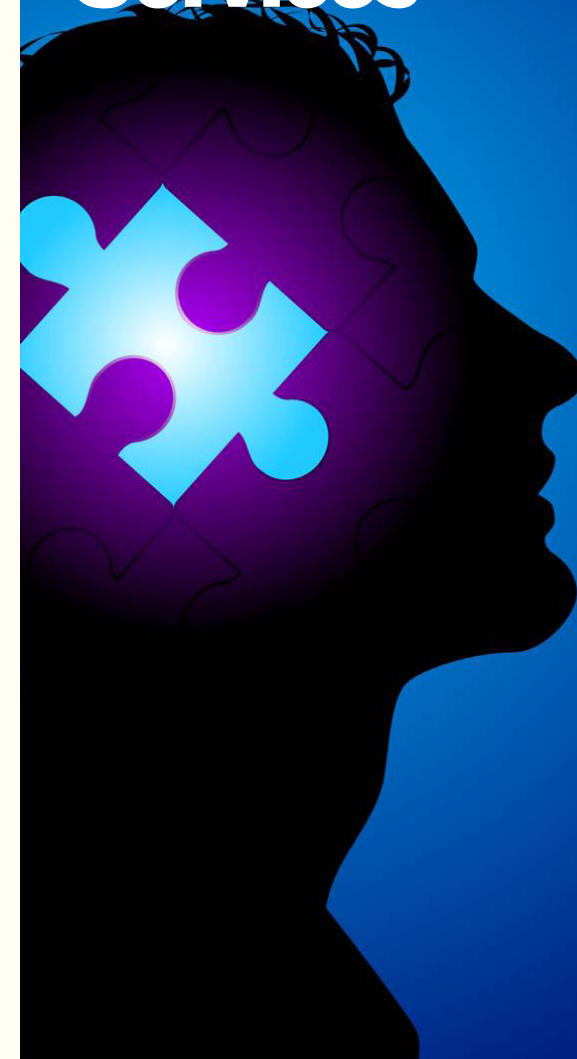
UC Campus	Major Name on Campus
Berkeley	Social Welfare B.A.
Davis	Human Development B.S.
CSU Campus	Major Name on Campus
Chico	Social Work B.A. *DL OPTION
Dominguez Hills	Health Science B.S. with Community Health Option Human Services B.A. Human Services B.A. with Mental Health Recovery Option
Fresno	Criminology B.S. with Victimology Option Health Science B.S. with Community Health Option Social Work B.A. Human Services B.S.
Fullerton	Social Work B.A. *DL OPTION
Humboldt	Social Work B.A.
Long Beach	Health Science B.S.
Los Angeles	Health Science B.S. with Option in Community Health Social Work B.A.
Monterey Bay	Collaborative Health & Human Services
Pomona	Sociology B.A. with Social Work Option
Sacramento	Health Science B.S. Concentration in Community Health Social Work B.A.
San Bernardino	Health Science (Public Health Education Concentration) B.S. Social Work B.A.
San Diego	Health Science B.S. with Emphasis in Public Health Social Work B.A.
San Francisco	Social Work B.A.
San Jose	Health Science B.S., (Concentration in Health Professions) Social Work B.A.
Sonoma	Sociology B.A.
Stanislaus	Sociology B.A. Concentration in Drug and Alcohol Studies Sociology B.A. Human Services

\*DL OPTION: Distributed Learning (DL) option offers a fully accredited hybrid online bachelor of arts degree in social work.

The California Community Colleges  
Allied Health Programs

Step Up to the Future  
with Careers in

**Mental Health  
and Human  
Services**



## Alcohol and Controlled Substances

Drug and alcohol counselors provide addiction prevention services and treatment as entry-level drug and alcohol counselors or case managers. Their duties may include but are not limited to intake, assessment, treatment planning, individual and group counseling, case management, crisis intervention, client education and consultation with other professionals regarding client treatment and services. Positions may be available in outpatient or inpatient facilities, community health centers, community treatment programs, residential sites, and correctional facilities.

Allan Hancock  
American River  
Butte  
City College of San Francisco  
College of the Desert  
College of the Redwoods  
College of the Siskiyous  
Cypress  
Diablo Valley  
East L.A.  
Fresno City  
Glendale  
Hartnell  
Imperial Valley  
L.A. City  
L.A. Pierce  
L.A. Southwest  
Lake Tahoe  
Lassen  
Long Beach City  
Mendocino

Merced  
Merritt  
Modesto  
Mt. San Antonio  
Mt. San Jacinto  
Palo Verde  
Palomar  
Porterville  
Rio Hondo  
Saddleback  
San Bernardino  
San Diego City  
San Joaquin Delta  
San Jose City  
San Mateo  
Santa Barbara City  
Santa Rosa Junior  
West L.A.  
Woodland  
Yuba

## Community Health Worker

Community health workers (CHWs) are frontline health care professionals. CHWs serve as a liaison between patients, community agencies, clinics and hospitals. These individuals are effective at building bridges between underserved communities and the health services they need.

**Cañada**  
**City College of San Francisco**  
**East L.A.**  
**Mission**  
**San Joaquin Delta**  
**Santa Rosa Junior**

## Psychiatric Technician

Psychiatric technicians work with people who have emotional or mental illness or those with developmental disabilities. They care for and interact with patients under the supervision of psychiatrists, psychologists, psychiatric registered nurses and therapists. Psychiatric technicians provide therapeutic services and lead them in their daily recreation, work and treatment activities. They observe patients and report any physical or behavioral changes to the professional staff. Psychiatric technicians can work in a variety of settings including inpatient or outpatient, community mental health agencies, board and care homes, crisis intervention centers, residential care facilities, correctional facilities and adolescent care centers.

Cuesta  
Cypress  
Mission  
Mt. San Antonio  
Napa Valley  
Porterville  
San Bernardino  
San Joaquin Delta  
West Hills Coalinga  
Yuba

## Human Services

The human services program is intended to prepare the student for an entry-level position in the human services field such as family services worker, mental health worker, life skills counselor, eligibility worker, community outreach worker and social services assistant. Human services programs offer a wide range of concentrations and can provide the skills necessary for entry-level positions in mental health, social services, substance abuse treatment and related fields.

Allan Hancock	Folsom Lake	Sacramento City
American River	Fresno City	Saddleback
Bakersfield	Imperial Valley	San Bernardino
Berkeley City	L.A. City	San Diego City
Butte	Las Positas	San Joaquin Delta
Cabrillo	Lassen	Santa Ana
Cañada	Long Beach City	Santa Rosa Junior
Cerritos	Mendocino	Solano
Cerro Coso	Merced	Southwestern
Chabot	Merritt	Ventura
Coastline	Mira Costa	Woodland
College of the Sequoias	Modesto	Yuba
College of the Siskiyous	Monterey	
Columbia	Moreno Valley	
Contra Costa	Napa Valley	
Cosumnes River	Orange Coast	
Cuyamaca	Oxnard	
Cypress	Porterville	
	Reedley	
	Riverside City	

## You may also be interested in the Family Studies programs offered at these colleges:

Cuesta  
L.A. Mission  
Orange Coast  
Saddleback  
Shasta

[www.assist.org](http://www.assist.org) - This website can assist you in exploring majors, transfer requirements and career pathways for California's public colleges and universities.



**Health Workforce Initiative**

[www.ca-hwi.org](http://www.ca-hwi.org) - The Health Workforce Initiative provides a search by program or by college for the California Community Colleges' allied health programs.